

University of Birmingham and Southeast University China

September 2026 Intake



UNIVERSITY OF
BIRMINGHAM



Presentation Agenda

Information for 2026 prospective applicants

- Introduction to the City of Birmingham and the University of Birmingham
- College of EPS programmes available for SEU students:
 - Chemical Engineering
- Other important information

Question and answer session

Welcome to University of Birmingham



UNIVERSITY OF
BIRMINGHAM





Campus Tour

Find your place at University of Birmingham

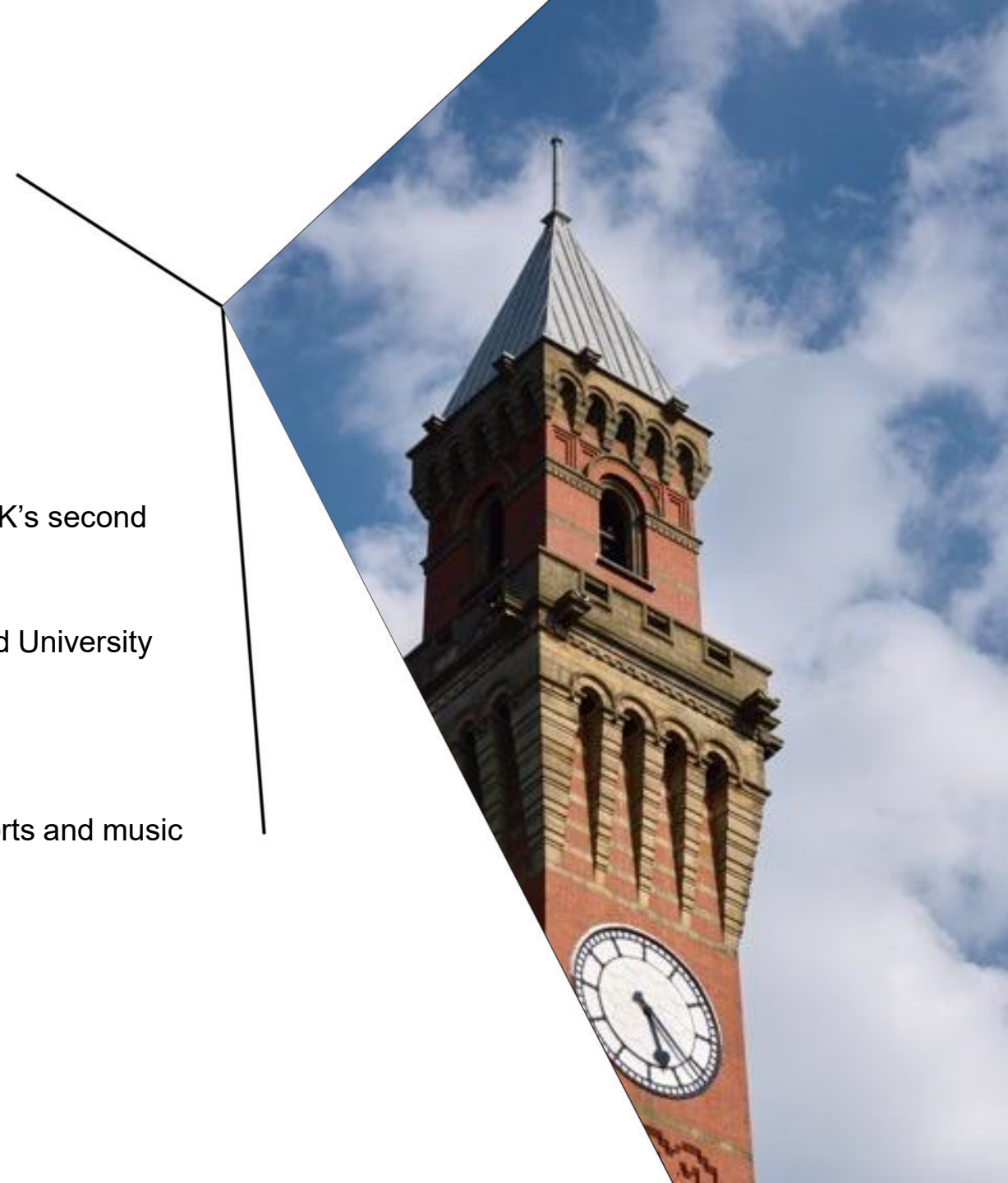


Why Birmingham?

- Founded in 1900 as England's first civic or 'red brick' university, where students from all backgrounds were accepted on an equal basis
- 276-acre campus university
- Best of both worlds – a safe, contained campus on the doorstep of the UK's second largest city
- Consistently ranked in global top 100 (Ranked 76th in the latest QS World University Rankings 2026, 11th in the UK)
- International outlook (1/4 students and 1/3 staff from overseas)
- Student experience – opportunities outside of your studies, including sports and music
- Produced 10 Nobel Prize winners



UNIVERSITY OF
BIRMINGHAM



Global top-100 university

- Founding member of the Russell Group (a group of 24 universities including Cambridge, Oxford, Imperial, UCL and LSE). Russell Group has parallels to the US Ivy League.
- One of the most targeted university by leading employers in 'High Filers' survey of the Graduate Market for the past three years

International and domestic rankings:

- Ranked 76th in the QS Global Rankings 2026 (11th in the UK)
- Ranked 98th in the Times Higher Education World University Rankings 2025 (11th in the UK)
- 14th in UK in the latest Complete University Guide League Tables 2026

<https://www.birmingham.ac.uk/university/fact/league-tables/ukleague.aspx>



UNIVERSITY OF
BIRMINGHAM

Why Study in the UK?

- World class international reputation – 90 years and counting
- Teaching by experts in their field
- Public universities that enjoy academic autonomy
- High standards - quality assurance by national bodies
- Small group teaching & personal attention
- High completion rates
- Exceptional student experience
- Investment in campus facilities & accommodation



UNIVERSITY OF
BIRMINGHAM





Modern Facilities



Sports and Fitness
Centre



The Green Heart



Library



Teaching and Learning
Building



UNIVERSITY OF
BIRMINGHAM

Birmingham - Your Second Home

- Second largest city in the UK – 1.1 million people
- In the centre of the country – 1.5hrs train to London
- Youngest city in Europe – 40% under 25
- Largest financial and creative districts outside of London
- 40% of our students stay in the city after graduation
- 7 mins on the train from campus to the city centre
- www.visitbirmingham.com



UNIVERSITY OF
BIRMINGHAM

Explore the City

- First class arts venues
- One of Europe's largest shopping developments
- More than 500 restaurants
- Exciting night life, clubs and bars
- Range of live music and theatre venues
- Host to international sporting venues
- Museums, gardens, galleries & historical houses
- Many Temples, Mosques, Synagogues & Churches



UNIVERSITY OF
BIRMINGHAM



A Vibrant City on Your Doorstep



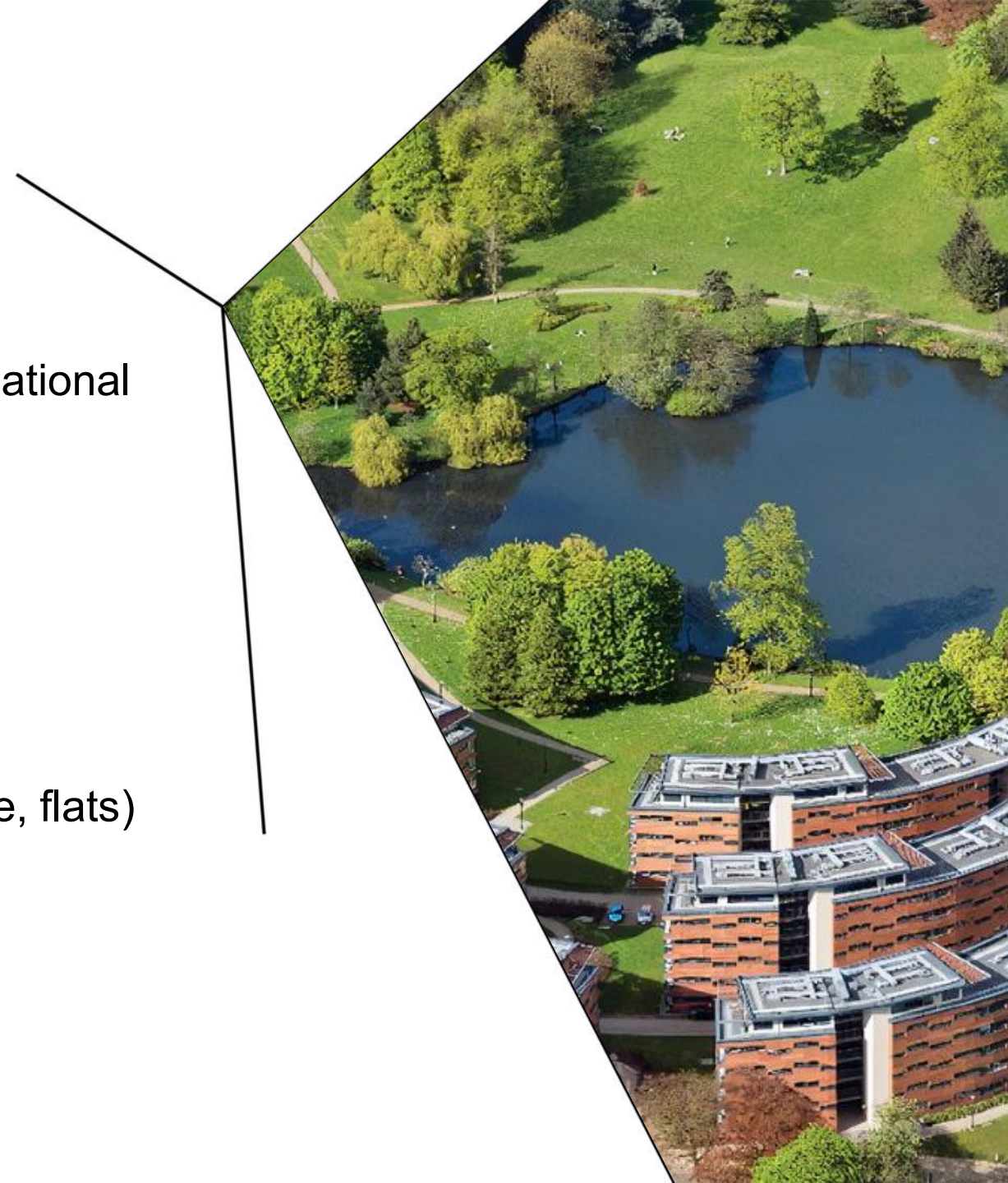
UNIVERSITY OF
BIRMINGHAM

Accommodation

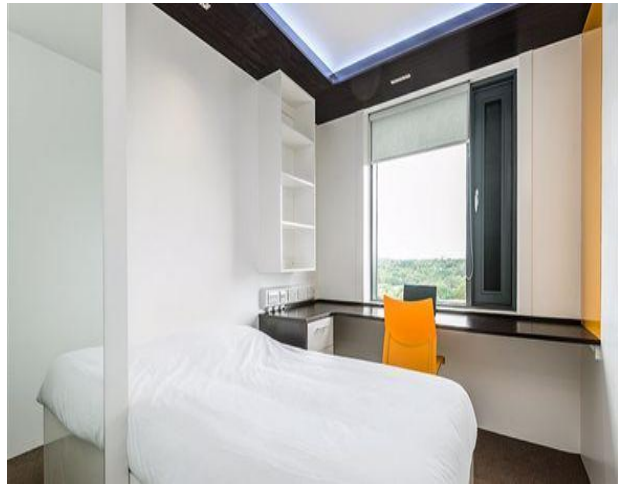
- University accommodation
- Can apply after receiving conditional offer
- Accommodation guarantee programmes for international students – **Apply by end of July**
- Mainly en-suite, single study rooms
- Shared kitchens
- Social spaces/canteen
- Close proximity to campus (UoB or private)
- Hub Help
- Private Accommodation
- StudentPad, Community Living
- Variety of accommodation available (shared house, flats)



UNIVERSITY OF
BIRMINGHAM



Accommodation



Bedroom



Shared kitchen

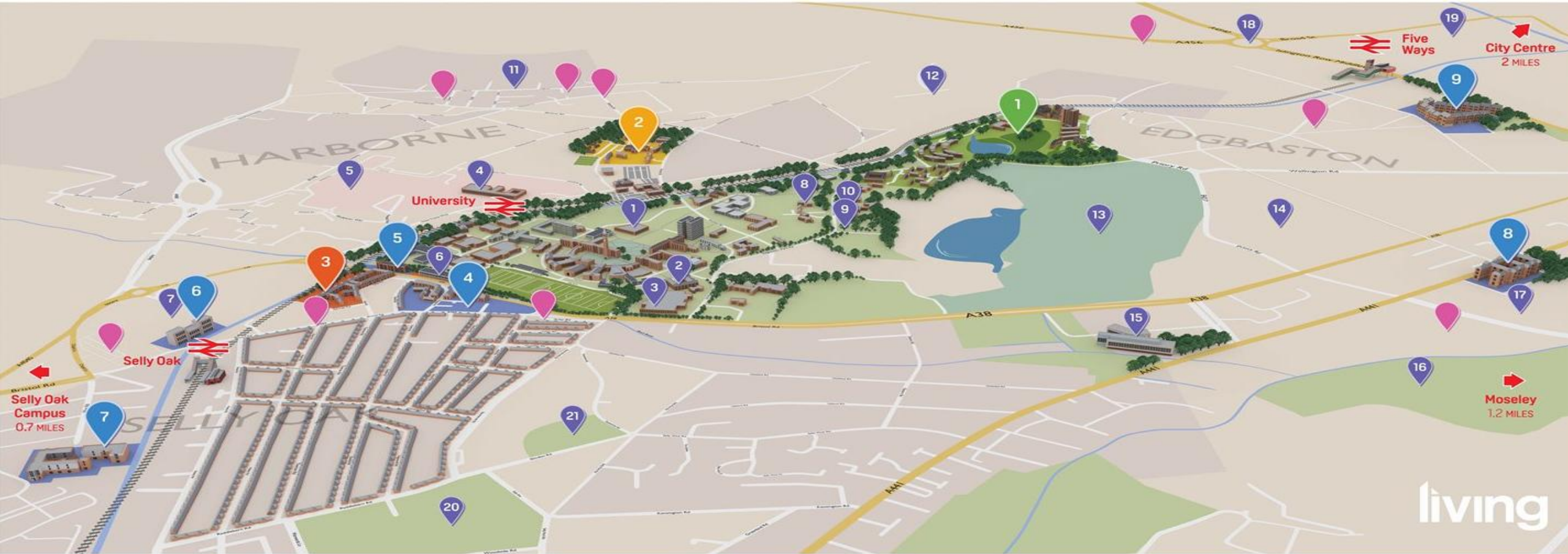


Outdoor areas



Shared living area





Student Accommodation

- | | | |
|---------------------------|-------------------------|-------------------|
| 1 The Vale Village | 4 Liberty Park | 7 Selly Oak Court |
| 2 Pritchatts Park Village | 5 Host - The Metalworks | 8 Liberty Court |
| 3 Selly Oak Village | 6 Unite | 9 Liberty Gardens |

Places of Interest

- | | |
|------------------------------------|-------------------------------|
| 1 University of Birmingham Library | 13 Edgbaston Golf Club |
| 2 Guild of Students | 14 Edgbaston Priory Club |
| 3 Sport and Fitness Centre | 15 School of Dentistry |
| 4 School of Medicine | 16 Cannon Hill Park |
| 5 Queen Elizabeth Hospital | 17 Edgbaston Cricket Ground |
| 6 Bournbrook Pavilion | 18 Five Ways |
| 7 Selly Oak Shopping Park | 19 Broad Street |
| 8 Edgbaston Park Hotel | 20 Selly Park |
| 9 Winterbourne House & Garden | 21 Elmdon Road Cricket Ground |
| 10 Lucas House Hotel | |
| 11 Harborne Village High Street | |
| 12 Birmingham Botanical Gardens | |

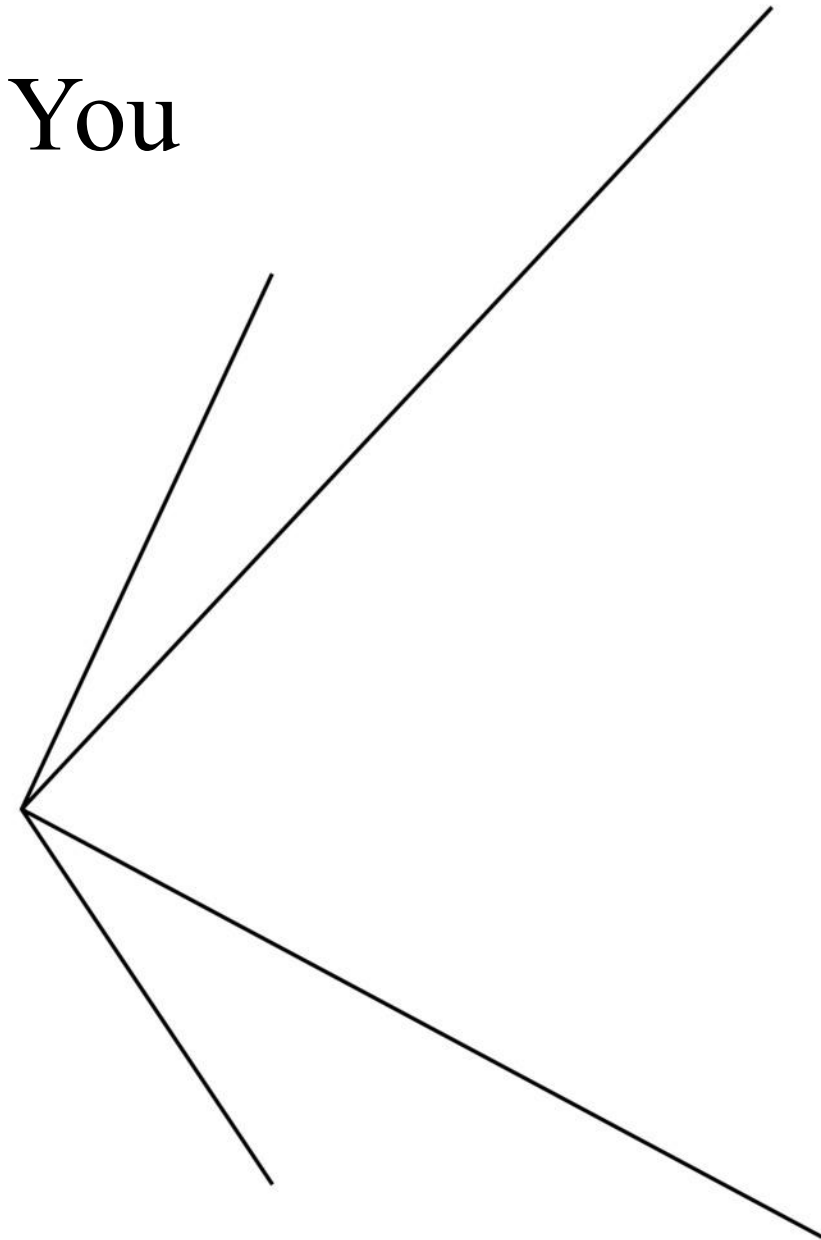
 **Supermarkets /Retail**

What the Partnership Means for You

- The partnership allows students who begin their studies at SEU to finish their studies at Birmingham and achieve a University of Birmingham Bachelors BEng degree (Bachelor of Engineering) in Chemical Engineering
- Students from SEU enter in Year 2 of University of Birmingham
- Students from SEU receive an annual partner tuition fee discount between 20%
- Study at a top-100 university (QS Rankings, 2026)
- Stay and work in the UK after graduation



UNIVERSITY OF
BIRMINGHAM





School of Chemical Engineering



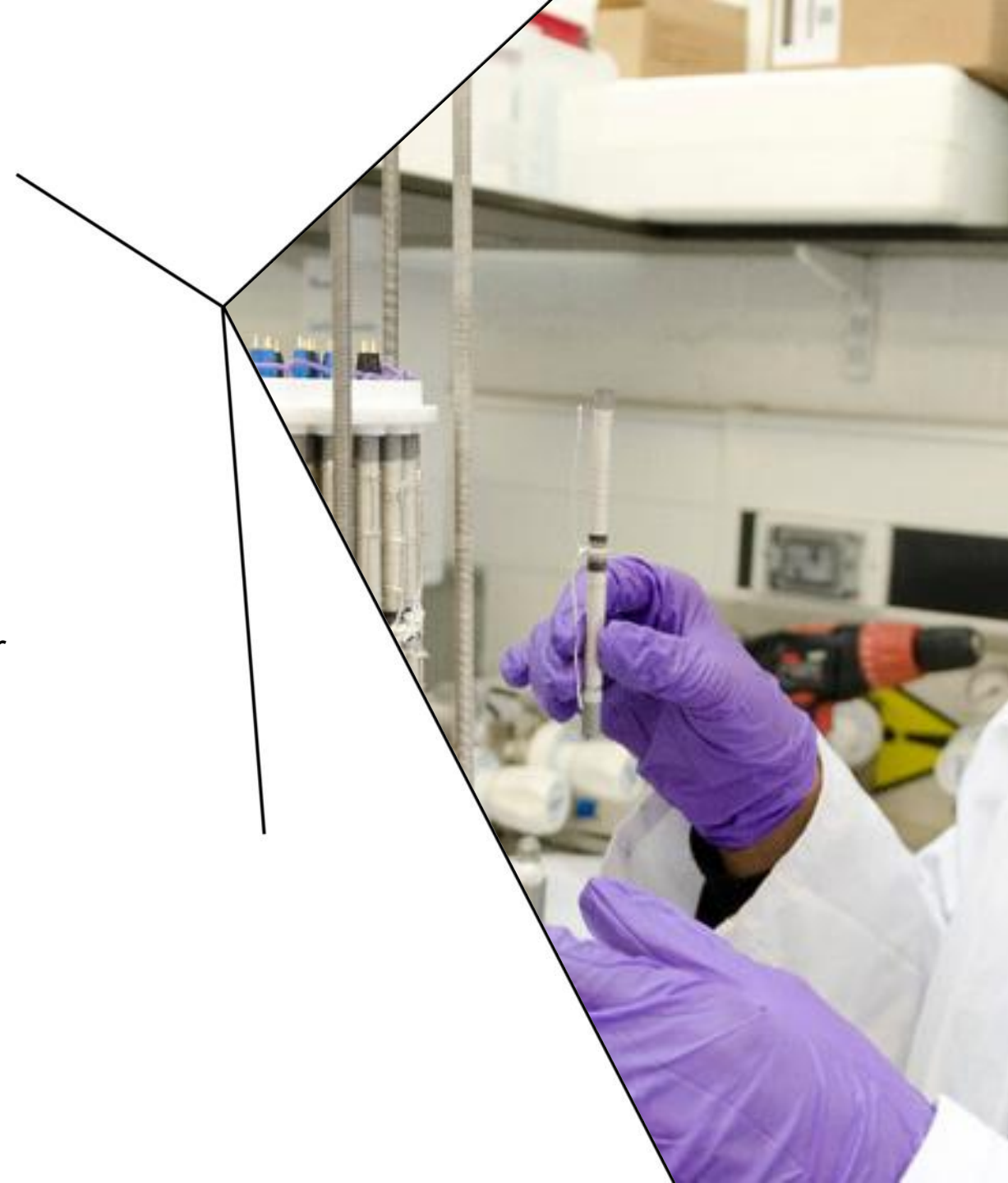
UNIVERSITY OF
BIRMINGHAM

Chemical Engineering

- Excellence in Research
- Industrial visits to the department
 - Guest lectures
 - Industrial dinner
 - Careers talks
- **Academics who have worked in industry:**
 - Nestle, GlaxoSmithKline, Smurfit Kappa, Unilever
- Consistent Excellence in Teaching
- Advanced Laboratories, Computational and E-learning Facilities
- **Programmes for SEU's students (BEng):**
 - Chemical Engineering



UNIVERSITY OF
BIRMINGHAM



Rankings

6th

Chemical
Engineering

Complete
University
Guide 2026

8th

Chemical
Engineering

UK Times
and Sunday
Times Good
University
Guide 2026

68th

Chemical
Engineering

2026 QS
World
Subject
Rankings



UNIVERSITY OF
BIRMINGHAM

Our School



The School of Chemical Engineering Building



The Molecular Sciences Building



The Collaborative Teaching Laboratory



UNIVERSITY OF BIRMINGHAM

Chemical Engineering at UoB

Fundamentals of
Chemical Engineering

Example modules:

Introduction to
Transport Phenomena

Reaction, Equilibria
and Thermodynamics

**Year 1 (you won't
take this year)**

Fundamentals of
Chemical Engineering

Example modules:

Sustainable Process
Engineering

Computing for
Chemical Engineers

Year 2

Design Project

Optional modules in
core research themes

Example modules:

Intro to Healthcare
Technologies

Engineering of Food

Year 3

Research Project

Optional modules in
core research themes

Example modules:

Renewable Energy
Systems

Frontiers in Tissue
Engineering

Year 4

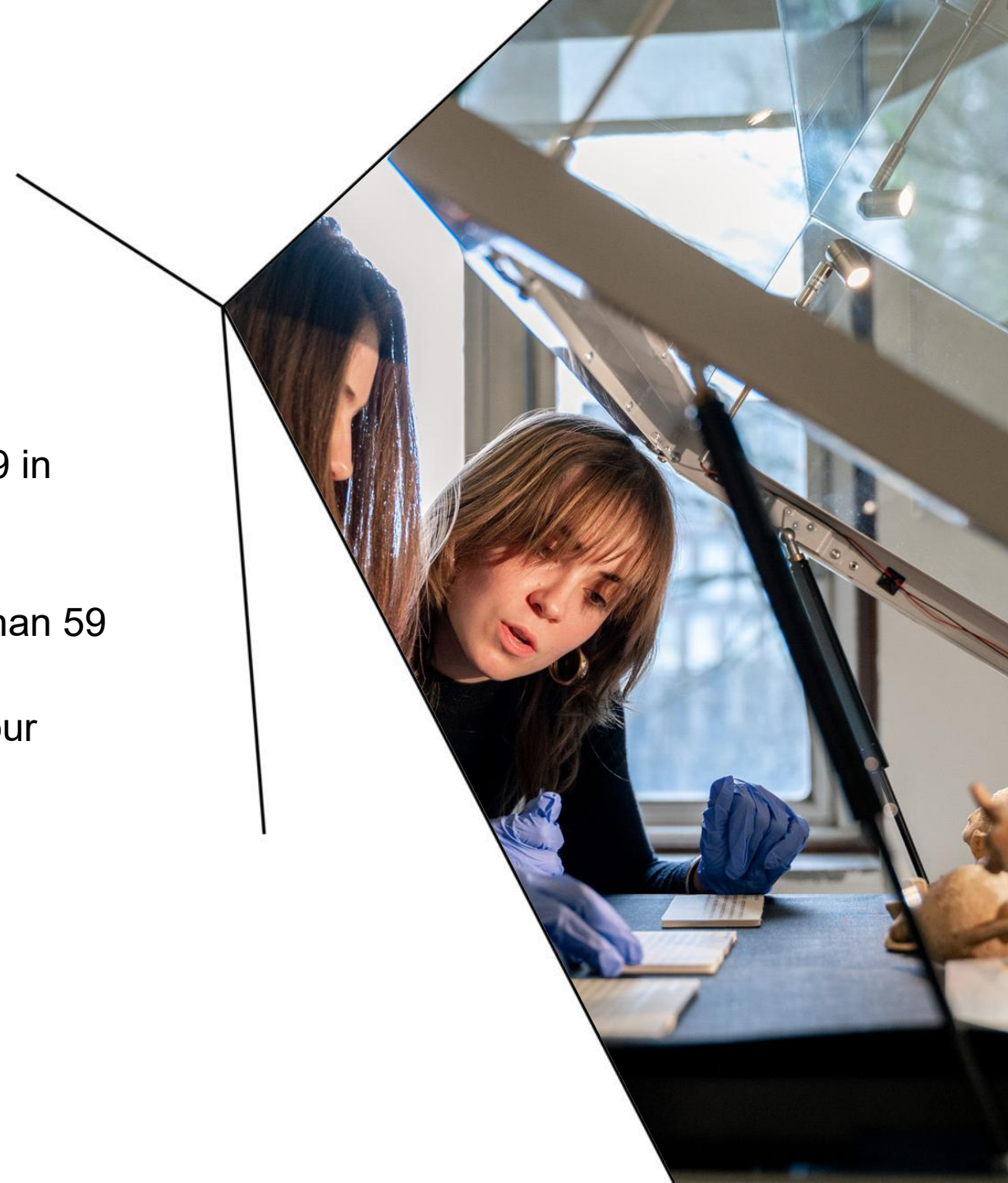
Entry Requirements - EPS

Engineering academic requirements:

- BEng: CGPA 3.0 from SEU

English Language Requirements:

- TOEFL: 80 overall with no less than 19 in Reading, 19 in Listening, 21 in Speaking and 19 in Writing.
- IELTS: 6.0 overall with no less than 5.5 in any band.
- Pearson Test of English (PTE): PTE 64 with no less than 59 in all four skills.
- Other English Language tests accepted, please see our website for details



Application Process - 2026

- Online applications for 2026 are open!
- Your home university staff will provide you with the link to apply.
- When you apply, you will need to upload a number of documents:
 - Latest transcripts from home university (and translations if required)
 - Copy of passport information page
 - Evidence of English language capability (eg IELTS or TOEFL) if you have this (you can submit this later)
 - Please make sure in your application you choose point of Entry: '2' (as you will be entering year 2 of the BEng in Chemical Engineering)
- After submitting all required documents you will receive your unconditional offer and CAS (Confirmation of Acceptance for Studies) letter. When your CAS is issued, you can apply for your UK Student Visa.
- When you have your offer, you can apply for accommodation
- Early applications are strongly recommended



English Language Requirements

One of the following requirements must be met:

- IELTS - 6.0 Overall (at least 5.5 in each band)
- TOEFL - 80 with no less than 19 in reading, 19 in listening, 21 in speaking and 19 in writing
- Pearson Test of English (PTE) - 51 in all four skills
- Cambridge English - Advanced Minimum overall score of 169, with no less than 162 in any component
- iGCSE / GCSE English – Grade C (taken in last 4 years)



UNIVERSITY OF
BIRMINGHAM

2026 Fees and Funding

- Tuition fees are paid annually
- All SEU students receive a 20% tuition fee discount scholarship in each year of study.
- Fees stay the same for all years of study
- Current year tuition fees: £32,160
 - *Students from SEU enjoy a 20% scholarship (£6,432) which makes the fees **£25,728***



Wellbeing and Support

- Personal Tutors
- Education Support Office (ESO)
- Reasonable Adjustment Programme (RAP)
- Disability Services
- School Wellbeing Officers
- Mental Health and Wellbeing team
- Wellbeing events throughout the year
- 24/7 support telephone line
- Physiological practitioners



Guild of Students / Societies

- Students' union for more than 36,000 students
- Over 300 societies
- Sports clubs and competitions
- Country societies – Malaysian, Chinese Students and Scholars Association, Indian, Indonesian, North African, Turkish, Ukrainian and many more!
- Religious societies – Christian, Hindu, Islamic
- You can even start your own society!
- Biggest employer of students on campus
- Student discounts



UNIVERSITY OF
BIRMINGHAM

Employability

- 85.3% of our students were in graduate level jobs or further training six months after graduation, in the top 10 of the Russell Group of universities
- Internationally QS World University Rankings have us ranked 61st in the world for employer reputation
- Graduate and subject specific careers events on-campus



UNIVERSITY OF
BIRMINGHAM



Graduate Careers

Our international students have gone on to work for the following companies across the world and many more...



Post-study Work Opportunities / Graduate Visa

- A Graduate visa gives you permission to stay in the UK after successfully completing a course in the UK. You must be in the UK when you apply.
- A Graduate visa currently lasts for 1.5 years if you study an Undergraduate or Masters level qualification (though this will be 18 months from 2027). If you have a PhD or other doctoral qualification, it will last for 3 years.
- You must apply before your Student visa or Tier 4 (General) student visa expires
- Cost:
 - £937 application fee
 - healthcare surcharge - this is usually around £1,000 for each year you'll be in the UK
- Further information: www.gov.uk/graduate-visa



UNIVERSITY OF
BIRMINGHAM



Working While You Study and Beyond

- Tier 4 student visa during studies
- Up to 20h per week during term time/FT during holidays
- **Minimum wage from April 2026:**
 - Minimum wage (21+): £12.71
 - Minimum wage (18-20): £10.85
- Can work on or off campus
- UoB 'WorkLink' advertises temporary and part time positions and pays **£15ph including holiday pay.**
- Careers Network supports with job hunting, career selection, CV's, interview practice, work experience, assessment centre preparation and internships
- Opportunity to work in UK following graduation*

*Dependant on working regulations at the time

Welcome to the
Worklink Hub



Key Tips and Next Steps!

- Start your application early
- Start preparing for and book your language test now
- If you need a new passport, apply for it now
- Find out about our pre-sessional English programmes

<https://www.birmingham.ac.uk/international/bia/index.aspx>

- Do some research about the University of Birmingham, ask a member of staff (us!) or one of your classmates who has been to UoB

<https://www.birmingham.ac.uk/international/students/country/china/index.aspx>





Contact us for
more information:

E: eps-international@contacts.bham.ac.uk



UNIVERSITY OF
BIRMINGHAM